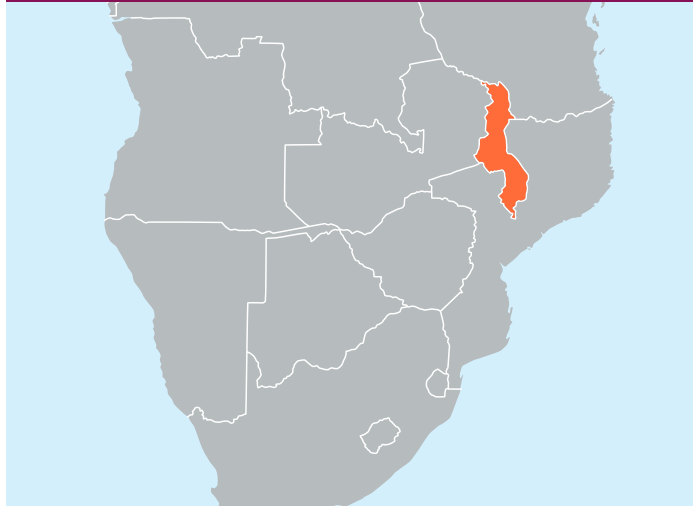


Malawi Fact Sheet

SEVA'S WORK AT A GLANCE: In country since 2018 | Partner: 1

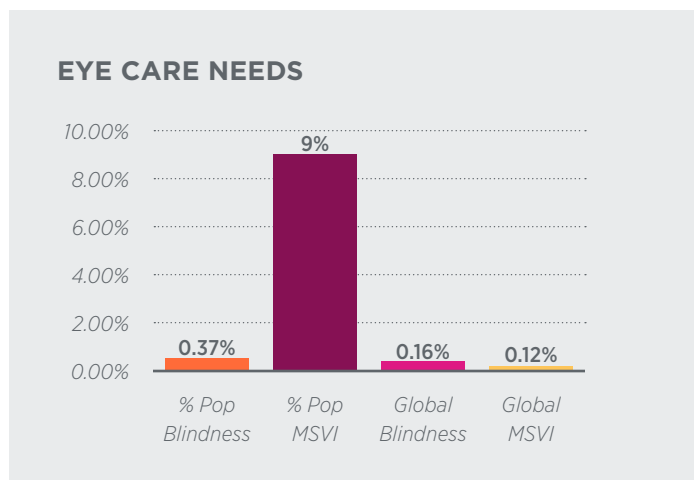


Country Overview

- » Located in Eastern Sub-Saharan Africa
- » Malawi spans 45,747 square miles
- » Population: 20.41 million people
- » 2023-24 Human Development Index Ranking: 172 of 193 countries¹

Scope of Eye Care Needs²

- » 0.40% of Malawi's population is blind, as compared to 0.19% in the United States
- » 9% of the population has moderate to severe vision impairment or MSVI, as compared to 2.02% in the United States
- » 0.16% of global blindness
- » 0.12% of global MSVI



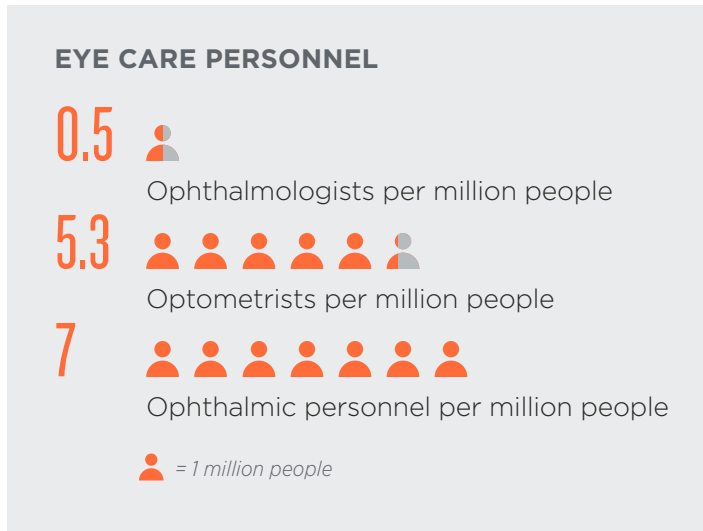
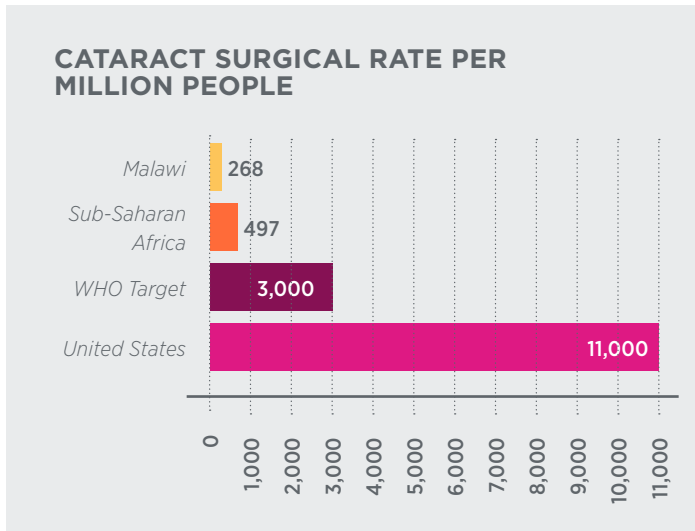
Nationwide Eye Care Response

Sub-Saharan Africa's median Cataract Surgical Rate (CSR) is 497 — 28% of the global average and 6% of the average for high-income countries. Seva works to improve these rates through building community screening and strengthening referral pathways that ensure children get timely services.

- » Malawi's CSR was 268 surgeries per million in 2019, as compared to the US CSR of 11,000
- » 0.5 ophthalmologists per million people in 2019 (14 total)
- » 5.3 optometrists per million people in 2019 (102 total)
- » 7 allied ophthalmic personnel per million people in 2019 (136 total)

¹ UNDP (United Nations Development Programme). 2024. Human Development Report 2023-24: Breaking the gridlock: Reimagining cooperation in a polarized world. New York.

² Unless otherwise noted, all country sight statistics from IAPB Vision Atlas: <https://www.iapb.org/learn/vision-atlas/>



Seva’s Approach in Malawi

Seva works with its partner to reduce childhood blindness in Malawi. Established in 2001 in response to the VISION 2020 initiative, Seva’s partner works to increase access to high-quality eye care services provided by Africans for Africans. With Seva’s support in hospital management systems and training, their partner works with local governmental hospitals to train community health workers, conduct outreach trips to rural communities without regular access to eye care, provide clinical training for ophthalmologists and cataract surgeons, and provide funds for medical treatments for those who cannot afford them. In Malawi, there is only one pediatric ophthalmologist for the entire country

Seva and its partner collaborate with this doctor and the hospital in Blantyre to expand its pediatric eye care program. This support includes necessary consumables, eye health promotion, training of key informants across communities who can identify eye health problems in children, as well as surgical support. It also contributes toward a coordinator tasked to manage the pediatric outreach efforts.

SPOTLIGHT ON BUILDING CAPACITY

Key informants are village members, selected and nominated by village leaders, who identify and create lists of children who are believed to have problems seeing and then refer them for clinical examination. In Malawi, informants who are actively engaged in various health-related activities were trained and sensitized on how to identify unhealthy eyes within their assigned specific geographic jurisdictions where they are responsible for conducting health education, referrals, and performing health surveillance duties. 109 Community health surveillance assistants were trained in Chiradzuru and Chikwawa districts. These efforts have strengthened sustainability as there has been a noted increase in walk-in patients since the training, evidently build the capacity for community-based health interventions and improved health seeking behavior in the respective regions.

MALAWI FACT SHEET

IMPACT (FY 2023-2024)*

4,993

People receiving services

74

Cataract surgeries performed

4,993

Children screened

300

Children receiving surgeries

84

Children receiving glasses

* Numbers based on reports received.

Resources

[Seva's Drivers for Success: Eye Care for Children](#)

