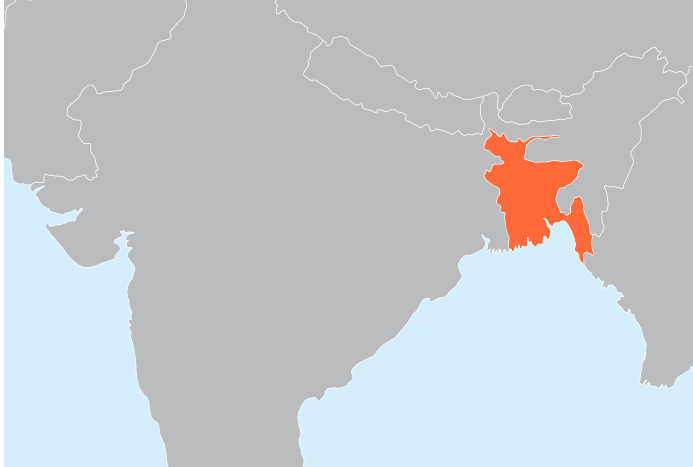


Bangladesh Fact Sheet

SEVA'S WORK AT A GLANCE: In country since 2005 | 3 Partners | 10 Hospitals



Country Overview

- » Located in South Asia
- » Bangladesh spans 56,977 square miles
- » Population: 171.2 million
- » 2023-2024 Human Development Index Ranking: 129 of 193 countries¹

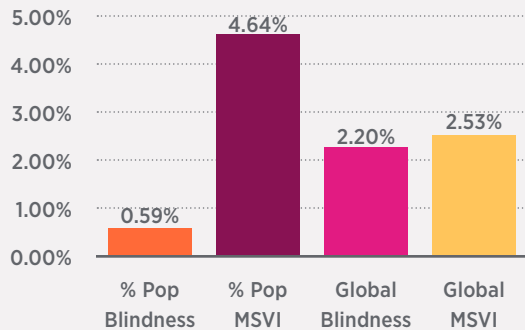
Scope of Eye Care Needs²

- » 0.59% of Bangladesh's population is blind, as compared to 0.19% in the United States
- » 4.64% of the population has moderate to severe vision impairment or MSVI, as compared to 2.02% in the United States
- » 2.20% of global blindness
- » 2.53% of global MSVI

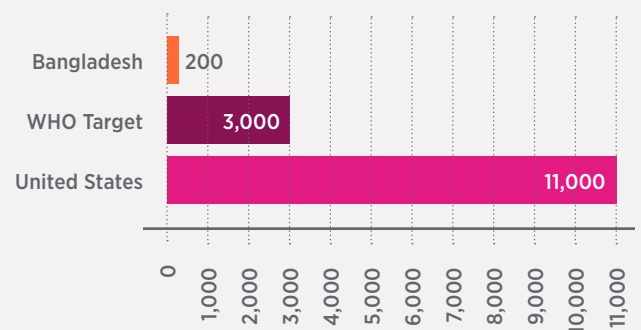
Nationwide Eye Care Response

- » Bangladesh's Cataract Surgical Rate (CSR) was 200 surgeries per million in 2019, as compared to the US CSR of 11,000
- » 6.2 ophthalmologists per million people in 2018 (1,200 total)
- » 1.2 optometrists per million people in 2019 (200 total)
- » 12 allied ophthalmic personnel per million people in 2019 (2,000 total)

EYE CARE NEEDS



CATARACT SURGICAL RATE PER MILLION PEOPLE



¹ UNDP (United Nations Development Programme). 2024. Human Development Report 2023-24: Breaking the gridlock: Reimagining cooperation in a polarized world. New York.

² Unless otherwise noted, all country sight statistics from IAPB Vision Atlas: <https://www.iapb.org/learn/vision-atlas/>

Seva's Approach in Bangladesh

Bangladesh ranks among the poorest countries in the world, with more than one-half of its people living below the poverty line and an estimated 800,000 people afflicted by blindness. As such, Seva Foundation partners with three organizations in Bangladesh to address the eye care need of these vulnerable populations. In the last years, Seva has worked with ten partner eye hospitals and supported the establishment of 30 Vision centers in seven divisions of Bangladesh.

By focusing on smart solutions and building partners' capacity in evidence-based decision making with the support of data dashboard and training — which includes Eyexcel, fellowships and conferences — as well as tracking data collection and evaluations, hospitals and local communities alike are more equipped to build out their capacity and more effectively serve their populations.

Through Seva's support, one of their long-term partners in Bangladesh provided free and subsidized surgeries to patients every year. This support is extended to three Secondary Eye Hospitals in Barishal, Jamalpur, and Naogaon. Last year, Seva supported establishing two new eye surgery centers at Amtali and Kulaura by upgrading the existing Vision Centers for providing comprehensive eye care services in the Barishal and Moulavibazar districts of Bangladesh. These new eye surgery centers are providing an additional 10,000 eye surgeries in the first three years.

The Amtali Eye Surgery Center acts as a first point of interface for the local population with comprehensive eye care services and surgery. These centers are equipped to provide cataract and duct surgeries along with other small surgeries by an experienced ophthalmologist. This acts as a hub for surgeries and additional care for a cluster of Vision Centers in the same areas and is closely connected and supported by the secondary level or tertiary level eye hospitals of our partner.

Working with Seva, another leading partner has established four hospitals in the Bogra, Barisal, Thakurgaon and Satkhira districts. Seva sponsors the training of the hospital's staff, including doctors, nurses, and management professionals. In the last three years alone, Seva has supported short and long-term clinical

training programs for more than 19 ophthalmologists, managers, and eye care providers from multiple eye hospitals. These trainings include Short Term Training in Phacoemulsification and Clinical Observership of Glaucoma, Management Training & Systems Development for Hospital Managers, Certification Courses on Instruments Maintenance for Technicians, Community Outreach and Social Marketing along with Management Priorities in Eye Care Delivery.

Additionally, the management and leadership exposure and orient on eye care priorities has been supported by Seva at the world's leading hospitals outside Bangladesh through multiple visits.

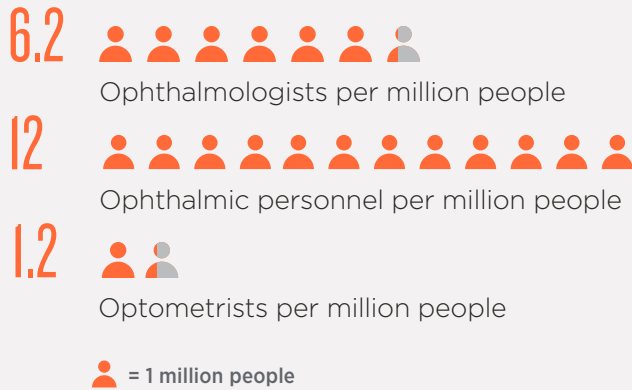
Seva's partner also established a Pediatric department at the Barishal Hospital that has started providing services in 2023. This pediatric unit at the hospital is expected to provide services to more than 50,000 patients through eye care treatment, surgeries, and by providing spectacles. This child friendly pediatric unit conducts pediatric surgeries, providing spectacles and medicines at subsidized prices/free of cost to poor children who need treatment.

These eye hospitals serve people living in micro-credit communities. Embedding the service delivery within the existing networks rapidly facilitate the opportunities for early detection and referral of people for cataract surgery and eye glasses and reduces costs for outreach. Together, we identify and overcome local barriers to care to ensure that quality services are accessed by underserved populations.

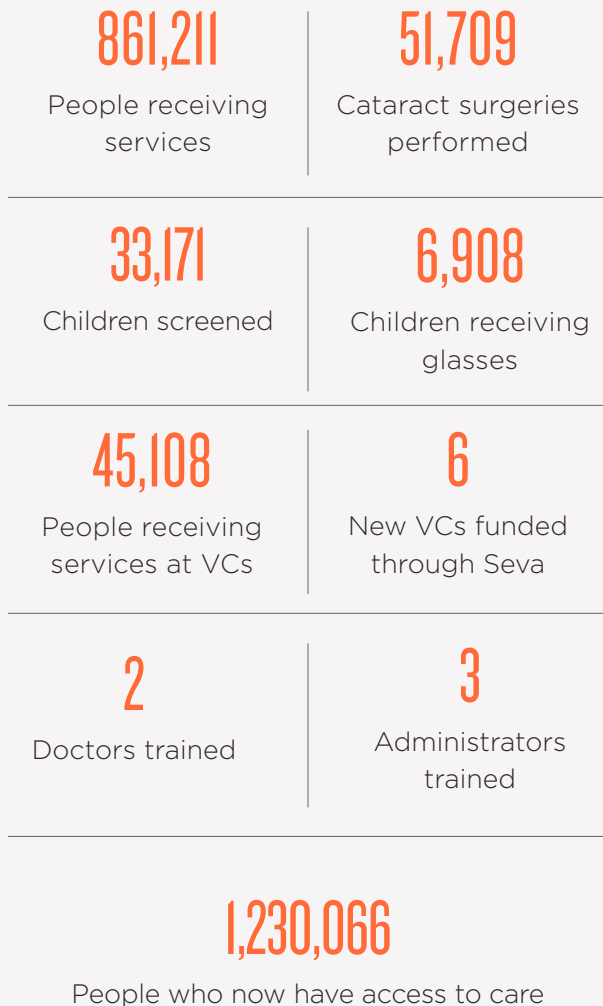
With our third partner, Seva supports low-cost and high-quality comprehensive eye care services for the vulnerable populations of Northern Bangladesh. Through the implementation of focused and comprehensive projects, they have grown in both reach and reputation over the last six decades, serving not only Ulipur but the entire Rangpur district and other parts of Northern Bangladesh.

BANGLADESH FACT SHEET

EYE CARE PERSONNEL



IMPACT (FY 2023-2024)*



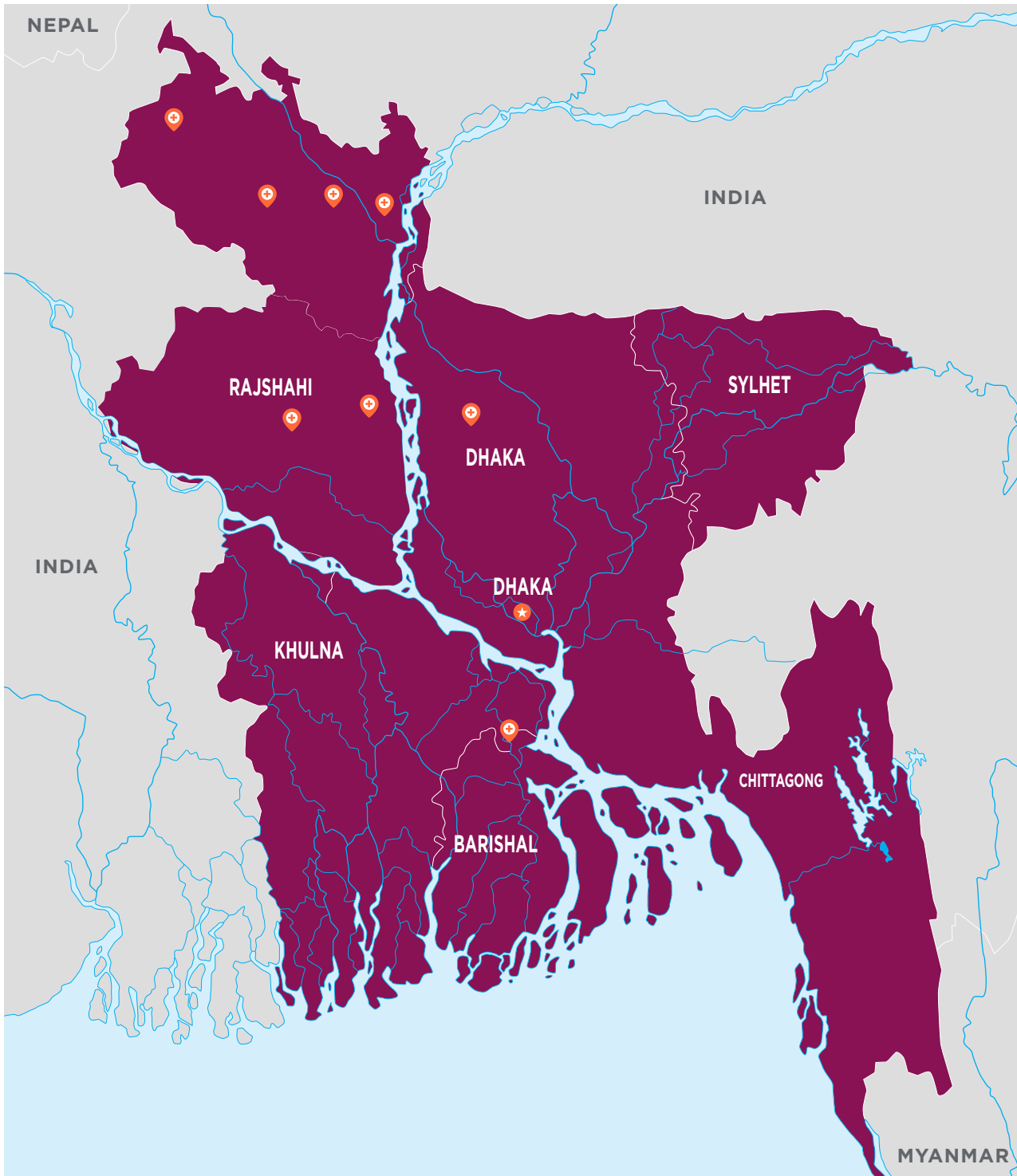
SPOTLIGHT ON STRENGTHENING PRIMARY EYE CARE THROUGH A NETWORK OF VISION CENTERS

Seva, in collaboration with partners in Bangladesh, has established and operates 30 Primary Eye Care Vision Centers. These centers are spread across 25 districts and provide eye care access to 4.3 million people in catchment areas.

Collectively, these Vision centers have provided 442,934 eye care screenings, provided 49,696 glasses, enabled 15,246 plus eye surgeries, and have referred 23,527 patients to the base hospitals for other eye conditions in the first three years of services or less. These Vision Centers provide a robust community service approach by ensuring access in under-served geographies. Vision Centers are efficiently run by a team of people including one Vision Technician or Junior Optometrist along with other support. The Vision centers in Bangladesh supported by Seva have 3 to 10 staff based on the model the partner hospital has adopted along with the need in the community and service provisions. The Vision Center employs additional Community Mobilizers, who oversee community engagement including refraction screening camps, advocacy, and frontline worker training. Vision Centers play a critical role in following up with patients who received surgery at the hospital and monitoring chronic eye diseases in consultation with the hospital.

Primary Eye Care Vision Centers plays a very important role in providing integrated people-centered eye care. The vision centers are part of a larger eye care network and people-centered eye care in remote rural areas of the country. Seva's approach focuses on strengthening the primary eye care network supported by secondary and tertiary care hospitals for the collective goal of achieving universal eye health and eliminating avoidable blindness.

BANGLADESH FACT SHEET



Resources

[Situational Analysis of Rohingya Refugees and Host Communities in Bangladesh](#)
[Training Ophthalmic Nurses in Bangladesh](#)